

A blue-tinted photograph of two women in an office setting. One woman is seated at a desk, looking at a laptop, while the other stands behind her, pointing at the screen. The image is partially obscured by a large red and teal geometric overlay on the right side.

Proposal for a Council Recommendation on Individual Learning Accounts

Changing labour markets



**Atypical forms
of work**



**More frequent
professional transitions**



**Shifting employment
between sectors**



**Shifting skills
needs**



**Demographic
changes**

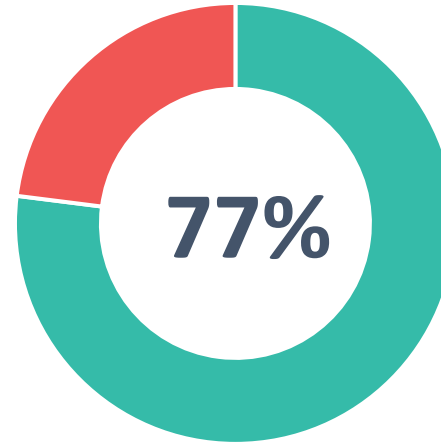
Policy Challenge

Low adult learning participation

21 Member States did not reach the EU adult learning target for 2020

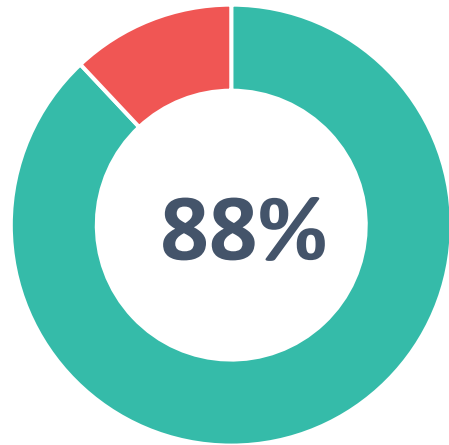


Skills shortages in a context of accelerating digital and green transitions



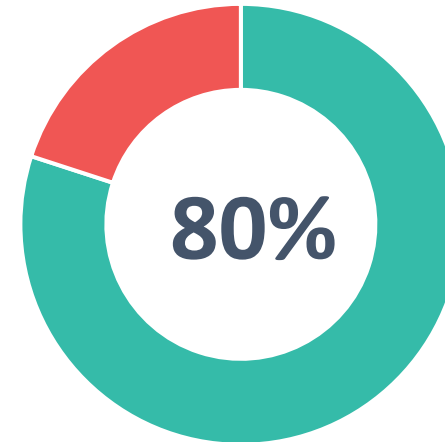
of companies report difficulties finding employees with right skills

Uneven support



of job-related training sponsored by the current employer

Insufficiently attractive supply



of non-learners in the past year “*did not want*” to learn

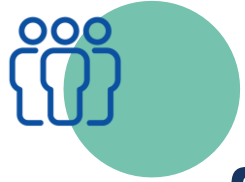
Objectives and Scope

Support Member States' reforms to enable more adults to engage in training

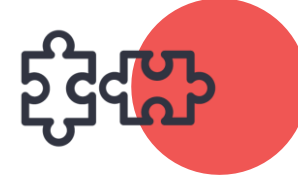
- (a) Support all working-age adults to access training, including for professional transitions and irrespective of their labour force or professional status
- (b) Increase individuals' incentives and motivation to seek training

Cover all working-age adults legally residing in a Member State

ILA - the basic principles



**Universal but
differentiated support**



**Accumulation &
transferability** of
entitlements



Use **it in transitions** from job
to job or in times of
unemployment



ILA



Keep it **while temporarily
abroad** and even use it
from there

Who is most in need of up- and reskilling?

To be defined depending on the national context...

Characteristics of the *individual*?

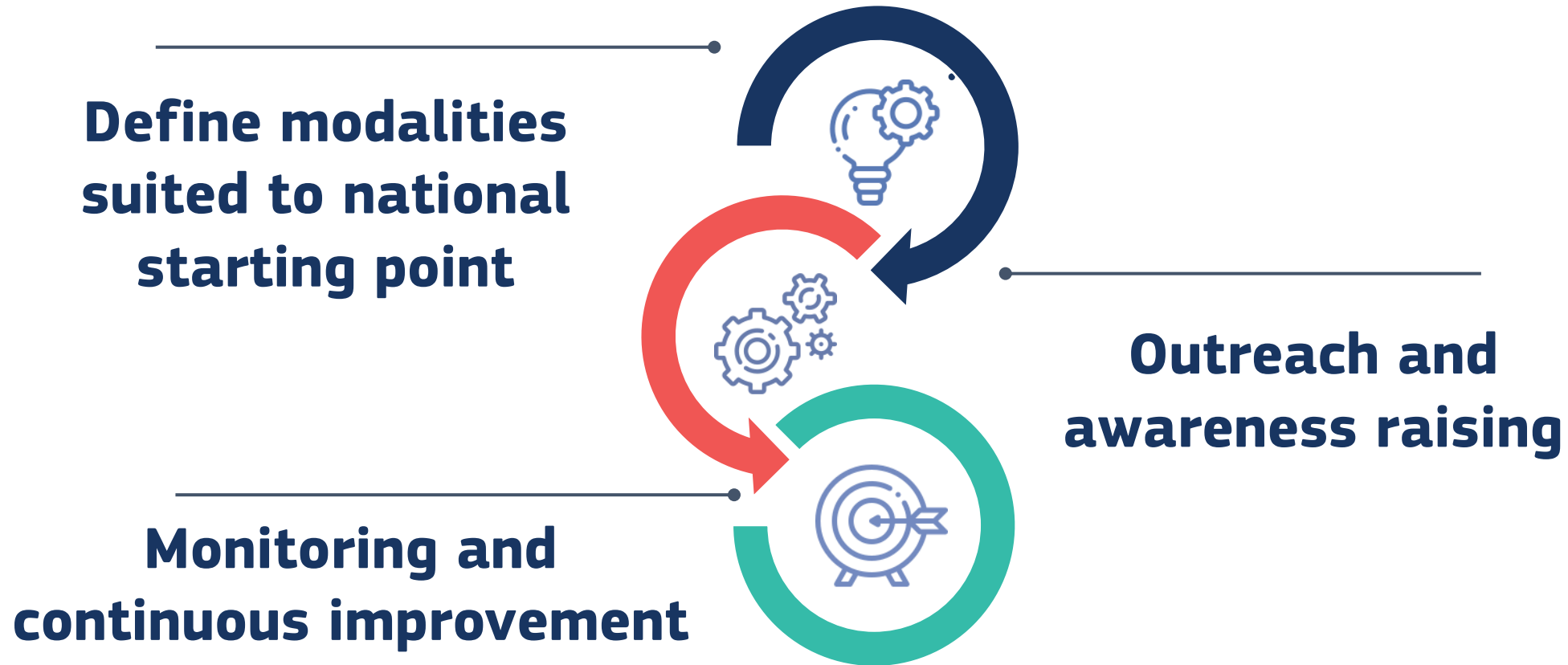
Characteristics of the *employment status* or *sector*?

...in consultation with social partners and relevant stakeholders

ILA and enabling framework



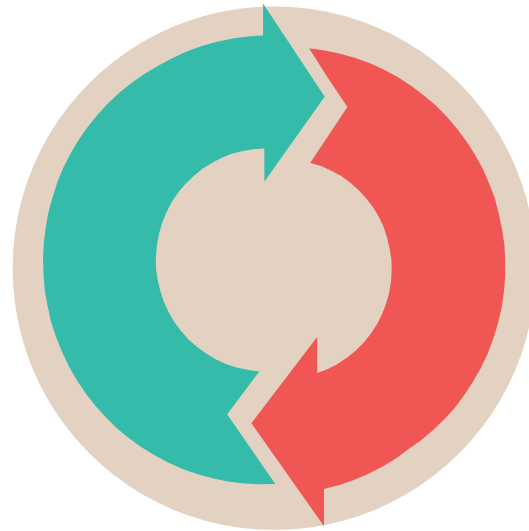
Implementation in Member States



Cooperation with social partners and stakeholders

make it **relevant to the national context**

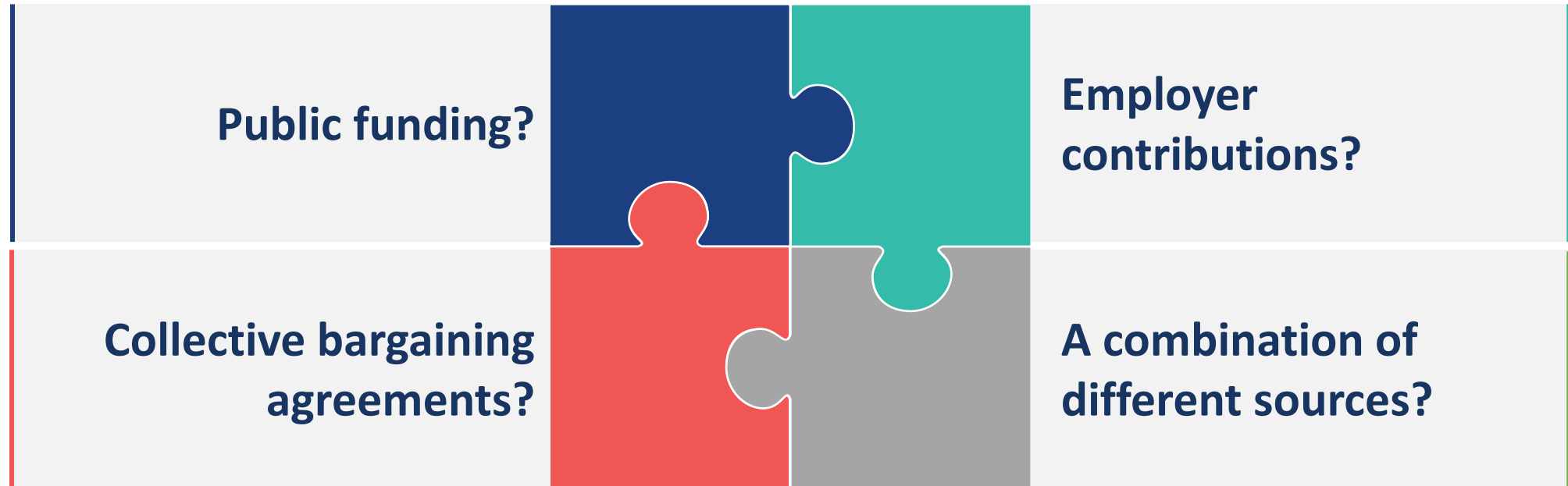
complement, but not replace
employer-organised training



boost the role of skills in
social dialogue

ensure that **skills are well aligned with
labour market needs**

Funding ILAs



EU support

Funding

- Recovery and Resilience Facility
- European Social Fund Plus
- European Regional Development Fund
- Just Transition Fund
- Technical Support Instrument

Implementation

- Facilitate mutual learning
- Develop relevant guidance material
- Further develop the Europass platform to support the recognition of ILA-funded training

Next steps



[Click here for further information](#)



Thank you!